

PLASTIC BOTTLE PERFORATOR - BLIK



B-400 Plastic bottle perforator

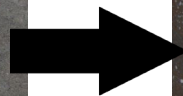
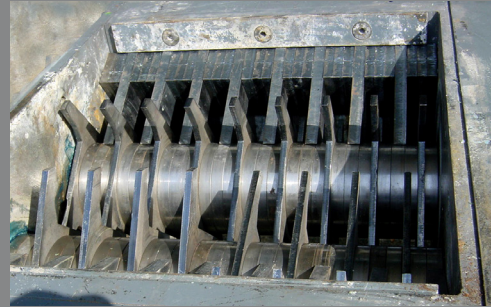
This model is the Perf-400/510. At maximum output, it can perforate between 12 000 and 15 000 bottle per hour.

There is also a 400/750 version wich can perforate approximately 20 000 bottle per hour.



B-600 Plastic bottle perforator

The cutting block of the Perf-600/950 does not simply perform multiples perforations to plastic containers. It can also crushes glass containers, metallic pieces etc... very easily.



Plastic bottle perforator BLIK



**Around
10 to 12
Perforations
per bottle**



The perforation tools have been carefully considered in order to grab efficiently every type of bottle between 0,5 and 2 liters.

The speed ratio of the rollers has also been optimised to obtain the best speed/density ratio of perforation without tearing or destroying the bottles.

Our perforators can be adapted to the hopper of an automatic baling press.

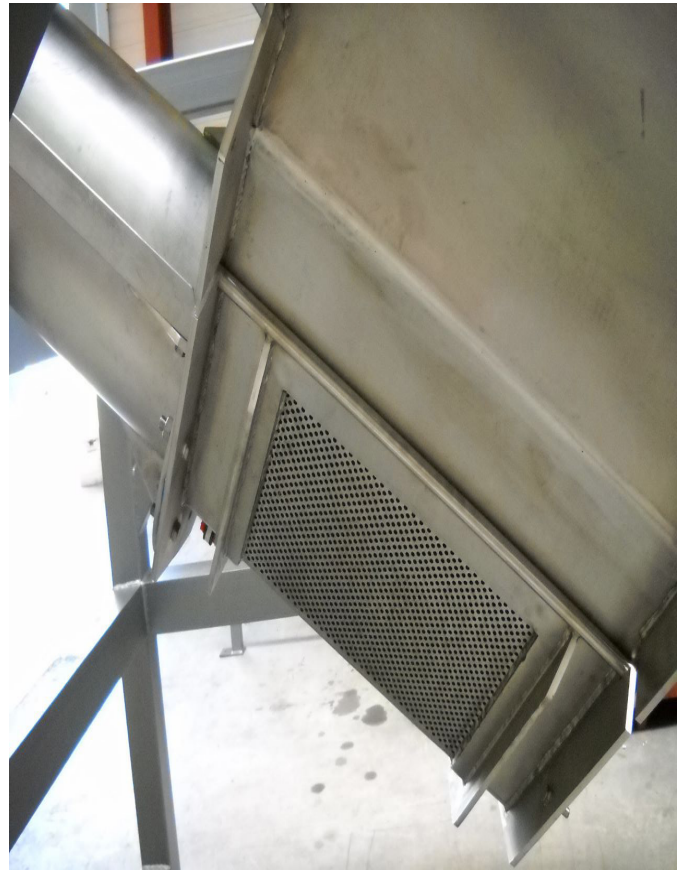
This equipment has also been designed to resist to abnormal objects. The example below shows what happens if you put a knife inside a bottle.

Sufficiently strong to digest those objects, the PERF-400 is equip with an electronic control wich can stop the device in case of an important overload. It stops in a few hundredth of seconds, way before the engine has attain its maximum torque.



Above : a knife stayed in the bottle. Its broken in 2 pieces and its blade is dulled. The bottle has 8 perforations and the knives of the device are undamaged.

Plastic bottle perforator BLIK



Option tilted screw to empty and rinse the bottles.

riddle of the tilted screw to evacuate any liquid.

Plastic bottle perforator - BLIK PERF-400 & 600 : Technical features

Model	PERF 400/510	PERF 400/750	PERF 600/750/950
Cutting section (mm)	420 x 510	420 x 750	600 x 950
Step between knives	36/60 mm	36/60 mm	36/60 mm
Engine	7,5 kW	7,5 kW	11 kW
Weight	Approx. 500 kg	Approx. 650 kg	Approx. 1400-1700 kg
Output per hour for 1,5 liter bottles.	12 000 to 15 000	20 000	30 000 to 50 000
Overload electronic management	yes	yes	yes
Possibility to directly supply a baling press	yes	yes	yes
Tilted screw option to empty and rinse the bottles	yes	yes	yes

Equipment CE 1 year guarantee.