

PLASTIC BOTTLE PERFORATOR – BLIK – PERF-400



For the purpose of this test, this perforator has been fitted with a small capacity hopper of approximately 100 litres.

Hoppers can be made to suit any requirements.

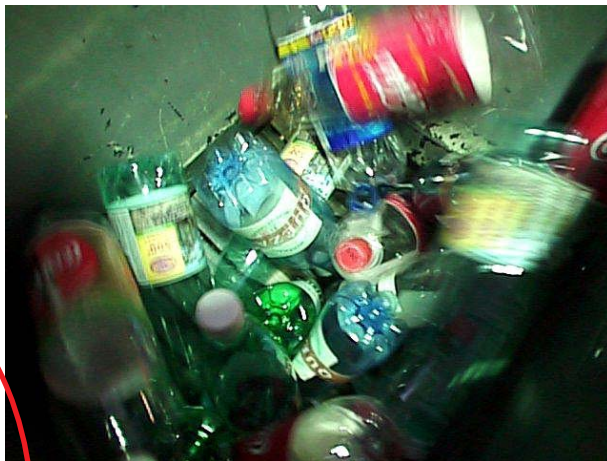
The model being presented here is a Perf-400/510 model. It has an output of between 12 and 15,000 bottles per hour.

There is also a 400/750 version of this model with an output of approximately 20,000 bottles per hour on continuous feed.



Approximately
10 to 12

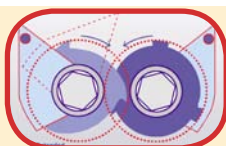
perforations
per
bottle



The perforation tools have been carefully designed to snap the bottles efficiently, regardless of the type or contents of the bottle from 0.5 to 2 litres. It can also be used for perforating large capacity HDPE cans.

The speed ratio of the shaft has been optimised to obtain the best Speed/density ratio without tearing or cutting the bottles. Each 1.5 litre bottle is perforated between 8 and 15 times. The blades are independent and interchangeable.

The perforators in this series can also be fitted to automatic bale press hoppers. They can be mobile, so that they can be attached to the hopper if the press has only one chute or fitted permanently, parallel to a side opening towards the press.



Blik

BLIK -

Waste Recovery

and Processing Equipment

Z.I. de Chenet

91490 MILLY-LA-FORET

E.mail: blik@blik.fr



www.blik.fr

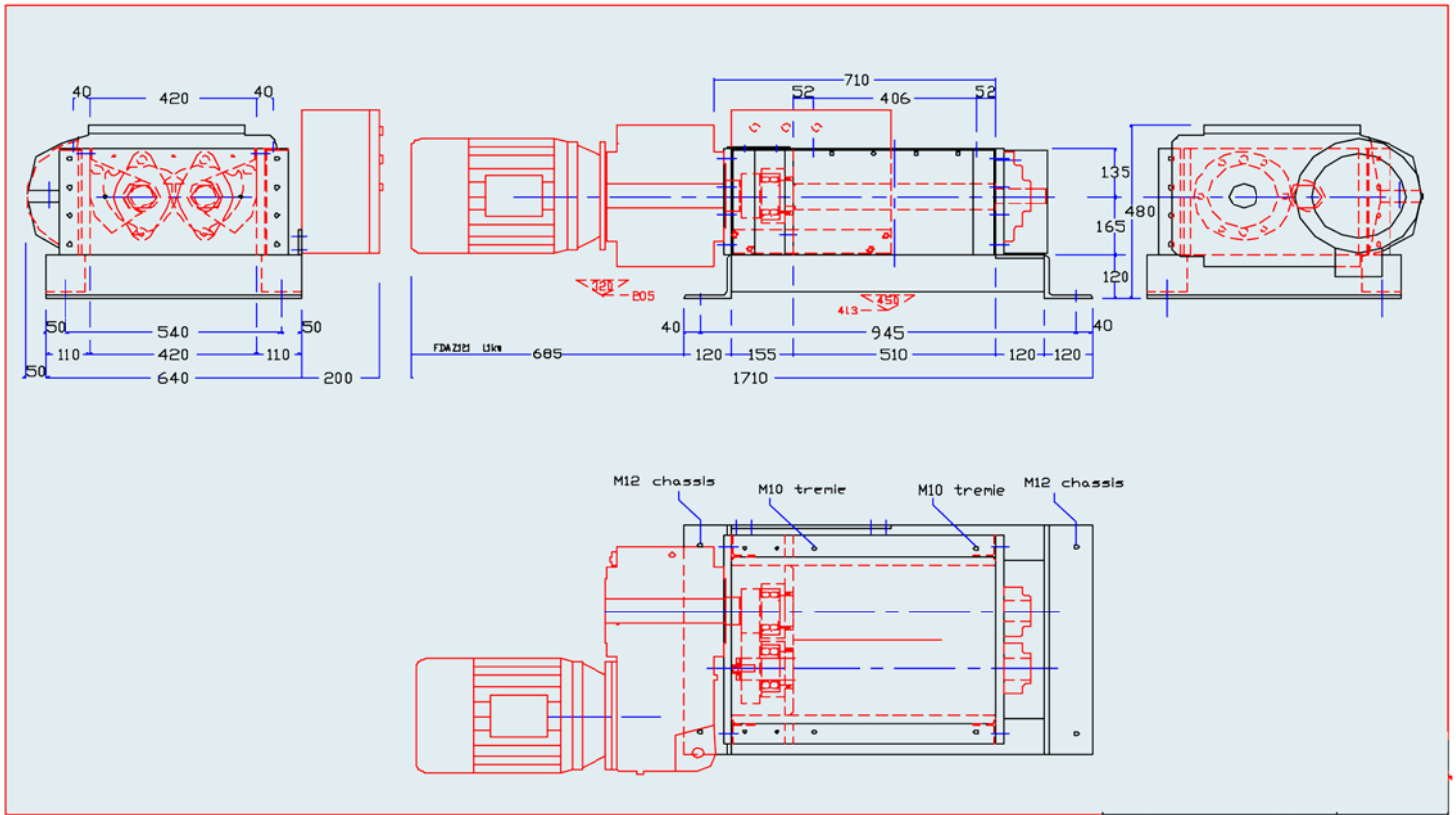
telephone:

33 (0)1 64 98 79 79

fax:

33 (0)1 64 98 79 78

page
1



Layout and dimensions of the perforating block without chassis and hopper. If required, the length can be reduced by changing the gear.

The 750 version is 250 mm longer. The other dimensions are identical. The control box can be placed anywhere.

This machine has also been designed to handle objects that are accidentally fed into it. The example below shows how the machine deals with a bottle with a knife accidentally left inside and some planks of wood.

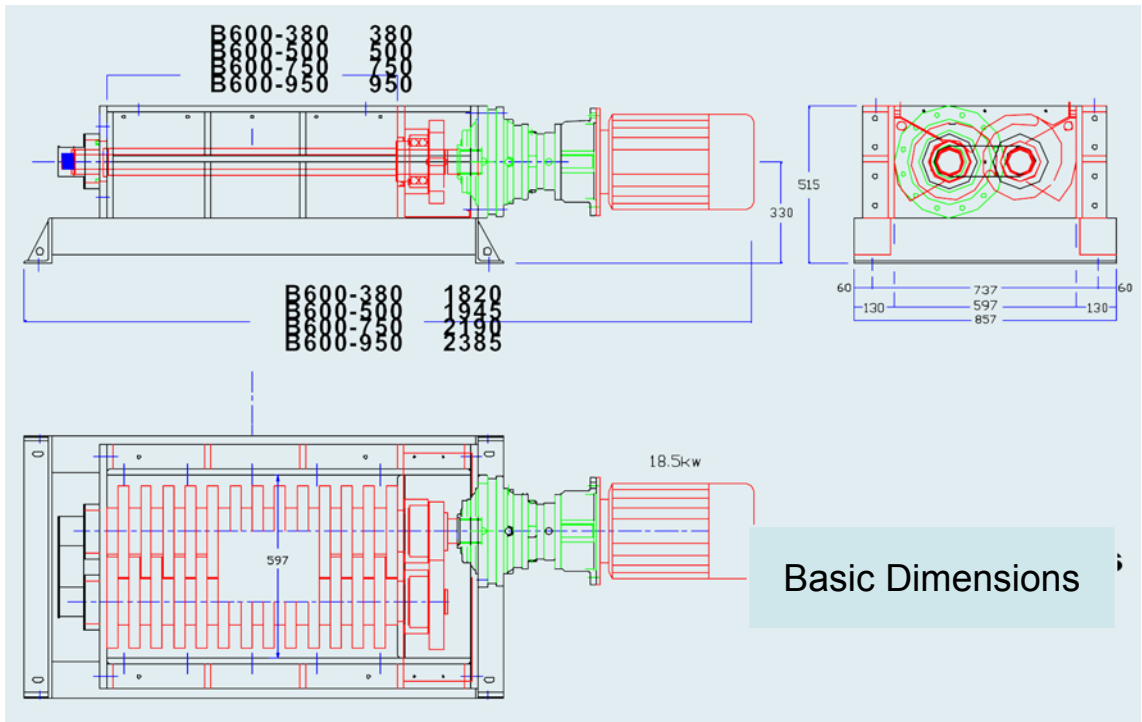
The PERF-400 is strong enough to handle these objects. It is fitted with an electronic control system, which stops the machine in the event of an overload. The stop is controlled to hundredths of a second, long before the motor reaches full torque.



Above: a knife has been left in the bottle. It is cut in half and its blade has been dented. The bottle has 8 perforations. There is no sign of the knife on the high resistance steel perforation blades.

Above: Planks of wood from a pallet after being fed through the perforator.

**With an
output of
50,000
bottles
per hour**



**PLASTIC BOTTLE PERFORATOR – BLIK – PERF-400 & 600:
GENERAL TECHNICAL FEATURES**

Model	PERF-400/510	PERF-400/750	PERF 600/750/950
Working section (mm)	420 x 510	420 x 750	600 x 950
No base between blades	28/35 mm	28/35 mm	
Motor	5,5 kW	7,5 kW	11 kW
Weight	Env. 500 kg	Env. 650 kg	Env. 1400-1700 kg
Hourly output of 1.5 litre bottles	12 à 15000	20.000	30 à 50.000
Electronic overload management	Yes	Yes	Yes
Can be fed directly from bale Presses	Yes	Yes	Yes

“EC” equipment with a 1-year warranty



The cutting block of the Blik B 600 Perf 950 shredder doesn't only make multiple perforations in the plastic containers; it can also handle glass or metal containers, amongst others, with lightning speed.



Mixed blades (perfo-plastics and glass-crusher) show no signs of wear even after lengthy, intensive use.



Extractor conveyor and separation sieve for the solid and liquid phases (optional).



View of the B600 with conveyor and sieve.